

STEP 1:

Go to www.bushnell.igolf.com

Click “REGISTER NOW”

If Watch is already registered,
enter Email and Password
then go directly to Step 3

Note: If you have already
registered your product, go
directly to **STEP 5**



Language:      



GPS RANGE FINDERS

IMPROVE YOUR GAME AT A GLANCE

Bushnell and iGolf have partnered to provide the world's largest, most accurate database of GPS course files for your Bushnell GPS devices. Register your device now to unlock exclusive membership features designed to improve your game. Sync your device, download GPS course files, track your handicap, read original content and connect with other golfers, all with your membership to iGolf.com.

[REGISTER NOW](#)

STEP 2:

REGISTER Product including serial number from back of watch.

Note: you will need to enter both the four-letter Code and all numbers

After entering user data,
Click "NEXT"



JOIN NOW STEP 1 OF 4

neoxgps@bushnell.com

.....

.....

NeoX Watch

nxrf13020017

NEXT

MEMBER INFO STEP 2 OF 3

First Name

Last Name

Address 1

Address 2

City

State

Other

Postal Code

Country

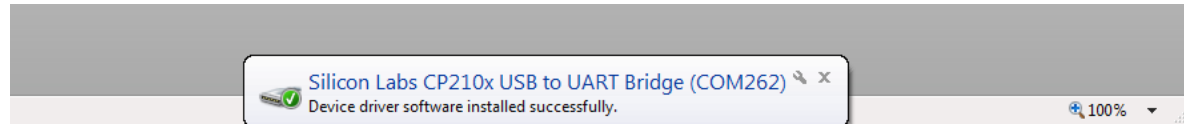
Phone

NEXT

STEP 3:

Connect Watch via cable from watch to USB input. The Driver will have installed automatically about 20-30 seconds after connection and providing a positive install (see right for example)

No need to click on anything on this page other than to Click “CONTINUE” after the watch driver installs



DRIVER INSTALLATION STEP 3 OF 3

This device requires the use of a driver in order to communicate with your computer. Follow the instructions to download and install the driver. There may also be a firmware update available for your watch. Instructions for updating the firmware are provided in a separate document below. This is currently available for Windows only.

1. Disconnect Device

If device is connected to the computer, please unplug and do not connect again until instructed.

2. Download Driver Installer

Do not close the web browser during this process as you will need to return to this page for further setup instructions. Click button below to download the Driver Installer application. Please make a note of where you save this file as you will need to access it in the next step.

[DOWNLOAD INSTALLER](#)

3. Run Installer

On your computer, locate the Driver Installer you downloaded in the previous step. Open this file and follow the instructions within the application to install the USB Driver before proceeding to the next step on this page.

[CONTINUE](#)

STEP 4:

Click “**DOWNLOAD PLUGIN**” which allows the website to communicate with the watch.



PLUGIN INSTALLATION SYNC SETUP

1. Download Sync Plugin Installer

This website utilizes a browser plugin which enables your device to sync and download GPS course files. The plugin has either not been installed on your computer, or a new version is available. Click the button below to download the latest Plugin Installer.

DOWNLOAD PLUGIN

Install Sync Plugin

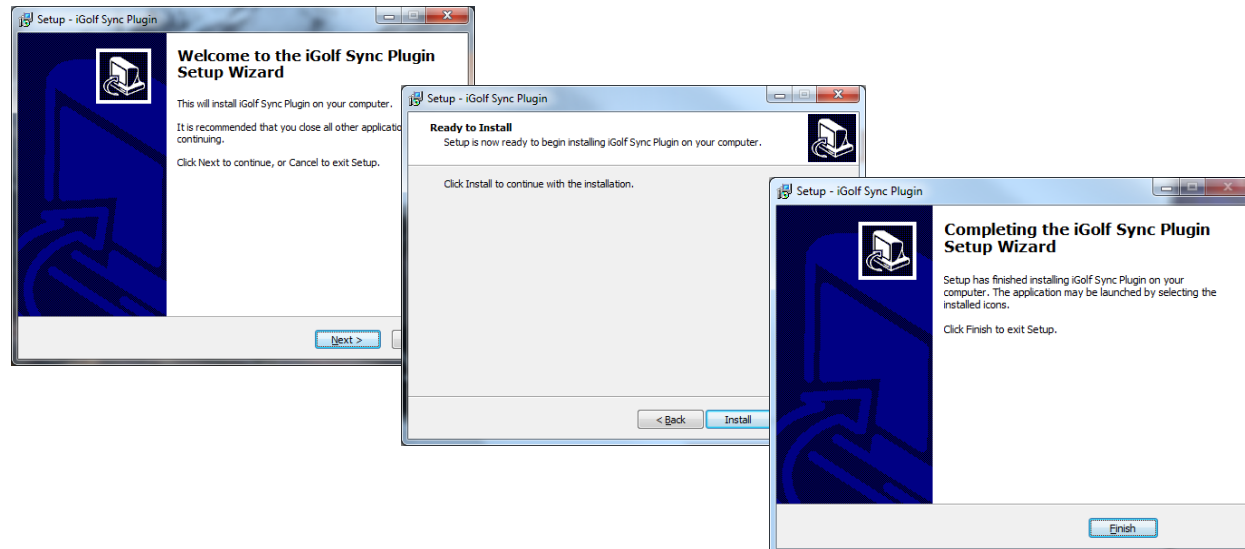
On your computer, locate the Plugin Installer application. Open this file and follow the instructions to install the Sync Plugin. Once installed return to this page and select the Continue button below.

CONTINUE

It is possible a message pops up, go ahead and click “Run” (or save it to the desktop and double-click the desktop icon to continue).

A series of Installation screens will guide the simple install process. Click “Finish” and go back to previous screen.

Click “**CONTINUE**” after the Plug-In installs



STEP 5:

Click "SEARCH COURSES"
and enter Course Name



GPS RANGE FINDERS IMPROVE YOUR GAME AT A GLANCE

Bushnell and iGolf have partnered to provide you with the world's largest, most accurate database of GPS course files for your Bushnell GPS device. Device Setup allows you to view instructions for setting up your Bushnell device, including potential firmware updates and driver installation procedures. Use Search Courses to view course information and GPS availability for courses, as well as add new files or update existing ones on your device.

[DEVICE SETUP](#)[SEARCH COURSES](#)

COURSE SEARCH

[SEARCH](#)

GOLF COURSE	CITY	STATE	COUNTRY	GPS


Syncing Device – Final Step:

With Watch still connected, a notification will appear showing “Device Connected” followed by “Updating Device” and when finished, “Sync Complete” which will take about 30-45 secs.

This confirms the watch has received the new map update and is ready for play.

COURSE SEARCH

ROCK SPRING CLUB		
ADDRESS 90 Rock Spring Road West Orange, New Jersey 07052 973-731-6466 Email: madderappa@aol.com Web: www.rockspringclub.com	WEATHER Tuesday June 11, 2013 77°F Overcast H: 79°F L: 61°F	Please connect your GPS Device using the provided USB Cable to your computer.  Device Connected
COURSE INFO Holes: 18 Hole Dress Code: No Denim Class: Private Season: Mar - Dec GPS Enabled: Yes	GPS INFO Front-Center-Back: <input checked="" type="checkbox"/> Custom Points: <input checked="" type="checkbox"/> Course Image: <input checked="" type="checkbox"/>	<input type="button" value="Download GPS Course File"/>

ROCK SPRING CLUB		
ADDRESS 90 Rock Spring Road West Orange, New Jersey 07052 973-731-6466 Email: madderappa@aol.com Web: www.rockspringclub.com	WEATHER Tuesday June 11, 2013 77°F Overcast H: 79°F L: 61°F	Please connect your GPS Device using the provided USB Cable to your computer.  Updating Device...
COURSE INFO Holes: 18 Hole Dress Code: No Denim Class: Private Season: Mar - Dec GPS Enabled: Yes	GPS INFO Front-Center-Back: <input checked="" type="checkbox"/> Custom Points: <input checked="" type="checkbox"/> Course Image: <input checked="" type="checkbox"/>	<input type="button" value="Download GPS Course File"/>

COURSE SEARCH

ROCK SPRING CLUB		
ADDRESS 90 Rock Spring Road West Orange, New Jersey 07052 973-731-6466 Email: madderappa@aol.com Web: www.rockspringclub.com	WEATHER Tuesday June 11, 2013 77°F Overcast H: 79°F L: 61°F	Please connect your GPS Device using the provided USB Cable to your computer.  Sync Completed
COURSE INFO Holes: 18 Hole Dress Code: No Denim Class: Private Season: Mar - Dec GPS Enabled: Yes	GPS INFO Front-Center-Back: <input checked="" type="checkbox"/> Custom Points: <input checked="" type="checkbox"/> Course Image: <input checked="" type="checkbox"/>	<input type="button" value="Download GPS Course File"/>